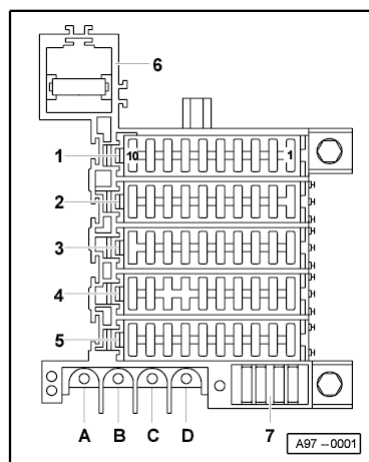


Audi A8**Current Flow Diagram****No. 62 / 1**

Edition 10.1998

Electric head restraint and lumbar support adjustment for rear seats

Model year 1998

Fuse box

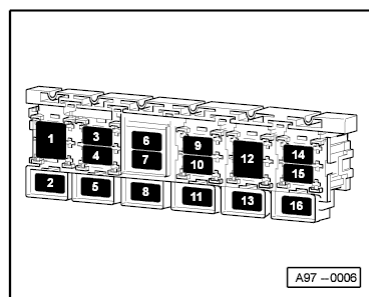
- 1 - Fuse carrier 1 (ST1), black
- 2 - Fuse carrier 1 (ST2), red
- 3 - Fuse carrier 1 (ST3), yellow
- 4 - Fuse carrier 1 (ST4), blue
- 5 - Fuse carrier 1 (ST5), brown
- 6 - Radiator fan fuse (S42)

7 - Spare fuses

A, B, C, Screwed junctions

D -

Relay and fuse carrier, luggage compartment, right



Position of fuses:

- 1 - Terminal 30 junction box (TV2)
- 14 - Seat adjustment fuse (S45)

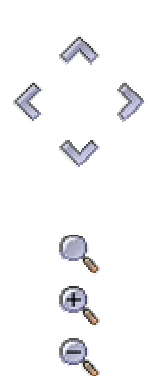
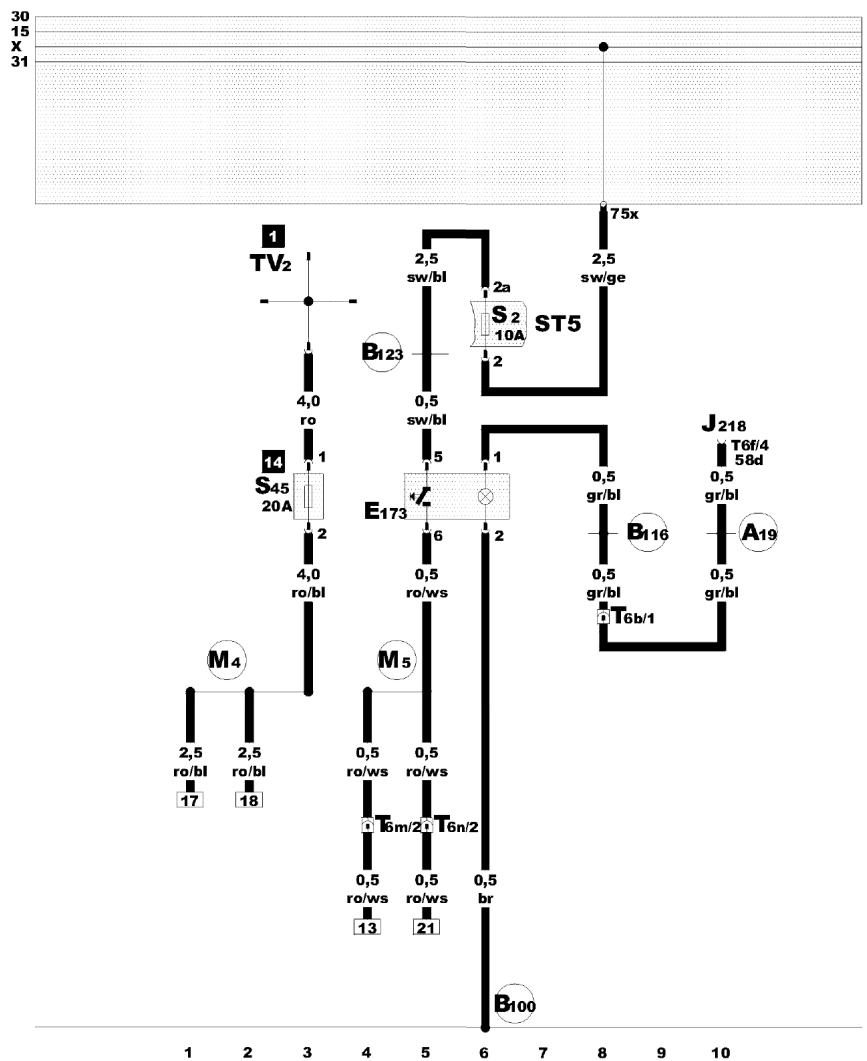
Fuse colours:

- 30 A - green
- 25 A - white
- 20 A - yellow
- 15 A - blue
- 10 A - red
- 5 A - beige

Audi A8

Current Flow Diagram

No. 62 / 2



- Head restraint adjustment switch, seat adjustment fuse**
- E173 - Rear head restraint adjustment switch
 - J218 - Combi-processor in dash panel insert
 - S2 - Fuse in fuse carrier
 - S45 - Seat adjustment fuse
 - T6b - 6-pin connector, grey, connector point, wheelhouse, right
 - T6f - 6-pin connector, black, on dash panel insert
 - T6m - 6-pin connector, green, in rear seat, centre section
 - TV2 - Terminal 30 junction box
 - A19 - Connection (58d), in dash panel wiring harness
 - B100 - Earth connection, in interior wiring harness, front right
 - B116 - Connection (58d), in interior wiring harness
 - B123 - Connection (75a, seat heating, mirror switch, seat memory), in interior wiring harness
 - M4 - Positive (+) connection (30), in rear seat adjustment wiring harness
 - M5 - Positive (+) connection (87R), in rear seat adjustment wiring harness

ws = white
 sw = black
 ro = red
 br = brown
 gn = green
 bl = blue
 gr = grey
 li = purple
 ge = yellow
 or = orange
 rs = pink

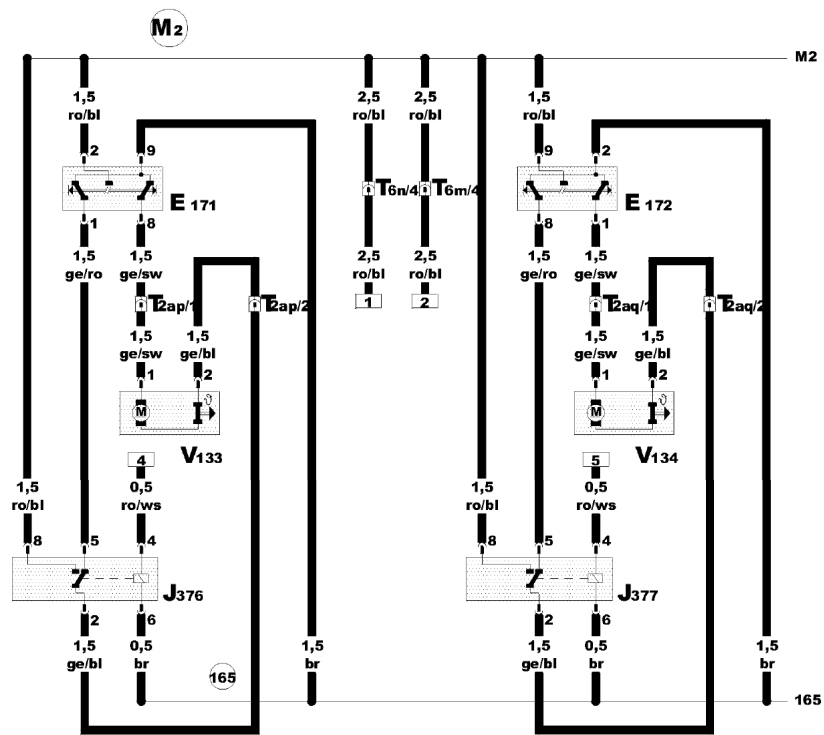
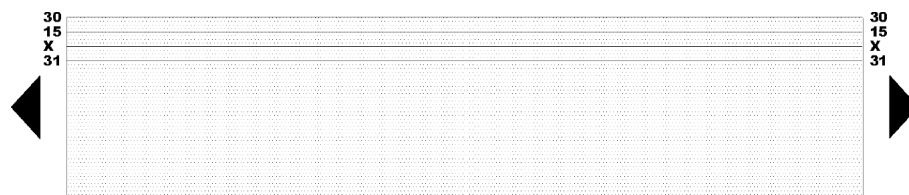
1 2 3 4 5 6 7 8 9 10

97-20100

Audi A8

Current Flow Diagram

No. 62 / 3



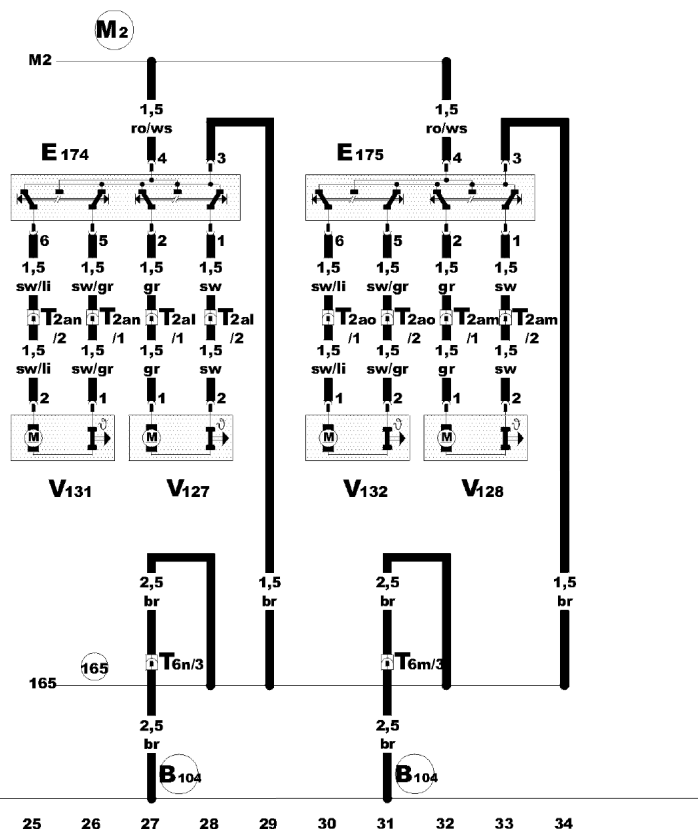
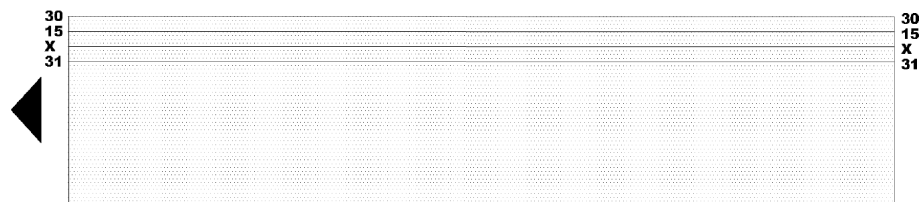
- ws = white
- sw = black
- ro = red
- br = brown
- gn = green
- bl = blue
- gr = grey
- li = purple
- ge = yellow
- or = orange
- rs = pink

- Electric head restraint adjustment for rear seats**
- E171 - Head restraint adjustment switch, rear left seat
 - E172 - Head restraint adjustment switch, rear right seat
 - J376 - Relay to lower rear left head restraint
 - J377 - Relay to lower rear right head restraint
 - T2ap - 2-pin connector, black, in rear seat, centre section
 - T2aq - 2-pin connector, black, in rear seat, centre section
 - T6m - 6-pin connector, green, in rear seat, centre section
 - T6n - 6-pin connector, red, in rear seat, centre section
 - V133 - Head restraint adjustment motor, rear left seat
 - V134 - Head restraint adjustment motor, rear right seat
 - 165 - Earth connection -1-, in rear seat adjustment wiring harness
 - M2 - Positive (+) connection -2- (30), in seat adjustment wiring harness

Audi A8

Current Flow Diagram

No. 62 / 4



ws = white
 sw = black
 ro = red
 br = brown
 gn = green
 bl = blue
 gr = grey
 li = purple
 ge = yellow
 or = orange
 rs = pink

- Electric lumbar support adjustment for rear seats**
- E174 - Lumbar support adjustment switch, rear left seat
 - E175 - Lumbar support adjustment switch, rear right seat
 - T2al - 2-pin connector, black, in rear seat, centre section
 - T2am - 2-pin connector, black, in rear seat, centre section
 - T2an - 2-pin connector, black, in rear seat, centre section
 - T2ao - 2-pin connector, black, in rear seat, centre section
 - T6m - 6-pin connector, green, in rear seat, centre section
 - T6n - 6-pin connector, red, in rear seat, centre section
 - V127 - Lumbar support longitudinal adjustment motor, rear left seat
 - V128 - Lumbar support longitudinal adjustment motor, rear right seat
 - V131 - Lumbar support height adjustment motor, rear left seat
 - V132 - Lumbar support height adjustment motor, rear right seat
 - 165 - Earth connection -1-, in rear seat adjustment wiring harness
 - B104 - Earth connection (rear right), in interior wiring harness
 - M2 - Positive (+) connection -2- (30), in seat adjustment wiring harness